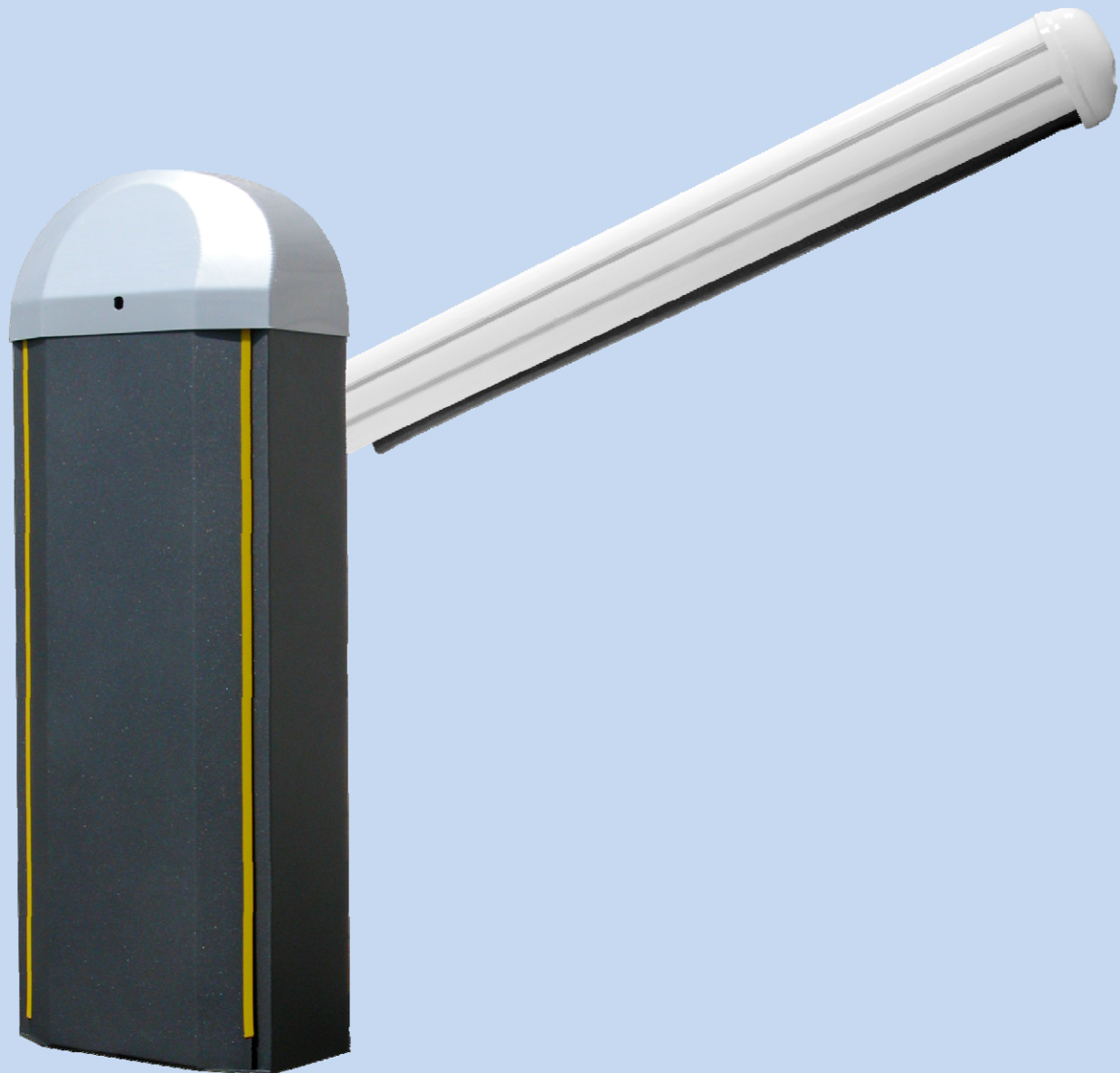


SPACE 8000



Road electromechanical barrier for intensive usage, 24Vdc for booms up to 8m



SPACE8000 is an electromechanical barrier designed to automate and control the access of vehicles to residential areas or parking. SPACE8000 it's available in the version at 24Vdc for intensive usage and with the cabinet in steel or stainless steel L. It has smooth stops in opening and closing and the control board, installed on the top of the cabinet, makes the access and regulation extremely comfortable.

SPACE 8000

Main characteristic

- Cabinet of the barrier in steel or stainless steel L
- With wind-stop boom and accessories max. length 8m
- Rubber edge installable on the boom
- Available in the version at 24Vdc intensive usage
- Signaling light with led installable on the boom
- Unlock by personalized key

Versions

| | |
|--------------|--|
| SPACE 8000 | Barrier 24Vdc, intensive usage, cabinet in steel, complete of control board. |
| SPACE 8000 X | Barrier 24Vdc, intensive usage, cabinet in stainless steel L, complete of control board. |

Technical characteristics

| Characteristics | |
|-------------------------|------------------|
| Motor feeding | 24Vdc |
| Absorbed power | 200W |
| Absorbed current | 8A |
| Torque | 300Nm |
| Temporary service | 85% |
| Working temperature | -30° / +70° |
| Opening time | From 5 to 8 Sec. |
| Max. length of the boom | 8m |
| IP degree | IP54 |
| Lubrication | Permanent grease |
| Weight | 90Kg |
| Dimensions (mm) | 470 x 275 x 1230 |



rev. 1.0.4, 06/2010



ACCESS AUTOMATION