

MC4

Motorgear for sliding gates up to 400kg

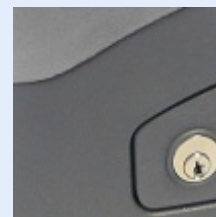
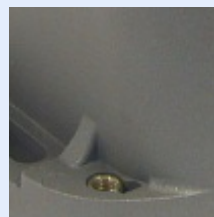
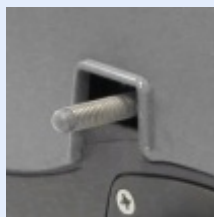
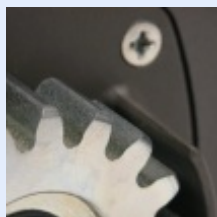


Electro-mechanic Gear-Motor designed to automate sliding gates and doors till 400 Kg.

It has a thermal sonde for motor blocking in case of overheating.

The motor is provided by a comfortable , reliable and protected lever is accessible by a personalized key. It is furnished also with a control board and a Rolling Code receiver..

MC4



Main Characteristics

- Maximum weight of the leaf
- Thermal protection
- Mechanic limit switch
- Unlock lever of easy usage
- Control board with radio receiver included
- Dimensions (L260 x H320 x P184 mm)

Versions

MC4 C	Motor gear with mechanical limit switch and control board with radio
-------	--

Technical Characteristics

Feed	230Vac 50-60Hz
Absorbed current	1,3 A
Motor power	300 W
Gate maximum weight	400 Kg
Drag Speed	0,16 m/s
Pushing power	400 N
Couple	20 Nm
Protection Grade	Ip44
Thermal protection	150°C
Functioning temperature	-20 +70 °C

