

# COMPASS-II

Irreversible electro mechanic operator  
230Vac



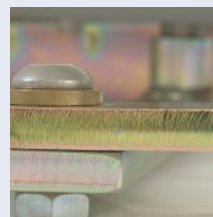
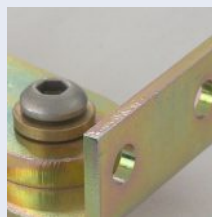
The irreversible electro mechanic operator COMPASS II suites to automate swinging gates till 3mt.

The motor is of high quality and sturdiness. The unlock system for the manual opening is easy to use. It has the possibility to install Limit Switches in opening and closing that joint with B&B PROGET electronic allows the slowing downs.

COMPASS II is suitable for being installed in pillars of big dimensions without the need to prepare any hole, it's furnished complete with levers. Suites to be used with the control boards B101, B102, C201, C202.



# COMPASS-II



## Main characteristics

- Self-locking moto gear
- Articulate arm in galvanized steel
- Practical manual release protect by safety key
- Only version for left or right leaf
- Of easy installation doesn't need of welding to the gate
- Integrated blocking limit switch

## Technical characteristic

Feed	230Vac 50 Hz +/-10%
Absorbed power	200W
Speed	14 m/min
Maximum torque	400Nm
Duty cycle	30%
Protection grade	Ip43
Working temperature	-20° +70°
Capacitor	15uF 400V
Thermal protection	140°

