

ANTIA

**Electro mechanic underground gear for
leafs till 2,5 Mt**

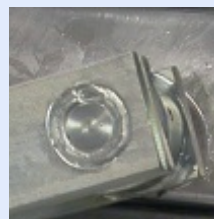


The underground electromechanical gear motor ANTIA, with his characteristics of sturdiness and reliability satisfies the more sophisticate needs of automation keeping untouched the esthetic of the gate. Build with a special alloy of aluminum and titanium increase his resistance to humidity and water offering a protection grade IP67. The easy unlock system allows the opening also in case of Black-Out.

For the best performance of the automation system is suggested to use B&B-PROGET control boards of the series B101, B102, C201, C202.



ANTIA



Main Characteristics

- Structure in a special alloy of aluminium with titanium
- 6 stopping modalities
- Thermal protection of the motor
- Foundation box in galvanized steel
- Protection grade IP67
- Comfortable unlocking lever

Versions

ANTIA	Underground motor for swinging leafs complete of levers
ANTIA BOX	Foundation box complete of unlocking with levers

Technical Characteristics

Feed	230Vac 50-60Hz
Absorbed Current	1,7A
Motor power	380W
Angular speed	4 °/S
Functioning temperature	-20 +70 °C
Thermal protection	140 °C
Duty cycle	30%
Protection grade	Ip67

